



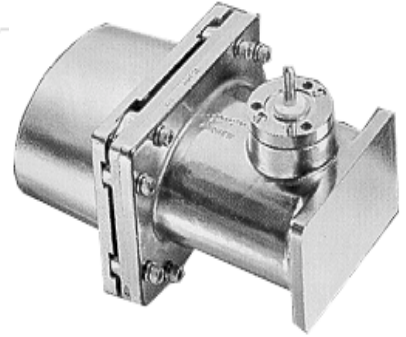
MMDS TRANSMITTER ACCESSORIES



WAVEGUIDE



7/8" FOAM
DIELECTRIC COAXIAL CABLE



WAVEGUIDE TO 7/8"

Specifications	Description	Frequency	Attenuation
WAVEGUIDE	EW20	1.9 TO 2.7GHZ	0.43dB/100FT @2.6GHZ
CONNECTOR FOAM COAX	WAVEGUIDE TO 7/8" 7/8" EIA	2.5 TO 2.7GHZ 0.5MHZ TO 5GHZ	2.15dB/100FT @2.3GHZ
CONNECTOR COUPLER PRESSURIZATION	7/8" EIA LSI-753-7 DRY AIR @ 0.9FT ³ /min	2.3 TO 2.7GHZ 2.5 TO 2.7GHZ	RL 20dB



7/8" EIA



LSI-753-7



PRESSURIZATION SYSTEM